

Simply point and choose...



Typical screen showing a vector chart with corresponding chart tools.

Examples of menu buttons:

Center on Boat - The chart updates itself around the boat automatically.

Quick Route - Quick and easy, make and activate a route from the boat's position.

Objects - Set and manage objects and marks in the chart.

View - Opens the "on the fly" multi monitor view manager.

Vessel - Define vessel behavior in chart.

Charts - Easily manage your charts.

Route - Make, open and activate routes.

User settings - Customize your system appearance.

MOB - Dedicated Man Over Board button for quick activation.



Simrad USB memory stick

Save your important routes, marks & tracks on a GB60 memory stick.

Dedicated buttons on the remote controls make it easier to move around in the system.



You can easily configure up to three monitors at the same time in the view manager.



Each monitor may be configured with up to six preset views in any desirable combination.

All within an arm's reach...

Simrad has developed a system capable of displaying, processing and controlling all significant vessel components all within arms reach. A number of dedicated operating units are available for the GB60, but it is also possible to operate the system with a standard keyboard and mouse.

A control panel can be built into the armrest to operate the GB60 from the helm chair since it might be inconvenient to reach the Glass Bridge Monitors on a large yacht. In addition, in heavy seas, it can be outright dangerous to stand up or to leave the chair.



Dedicated operating units developed from decades of navigation experience provide easy navigation in difficult situations. In addition to moving around in multiple monitors and views, the GB60 control unit gives direct access to the most used functions in the Chart, Radar, 3D plotter and other applications.



Set event marks and easily activate MOB.



Zoom in & out, center boat and set radar offset.

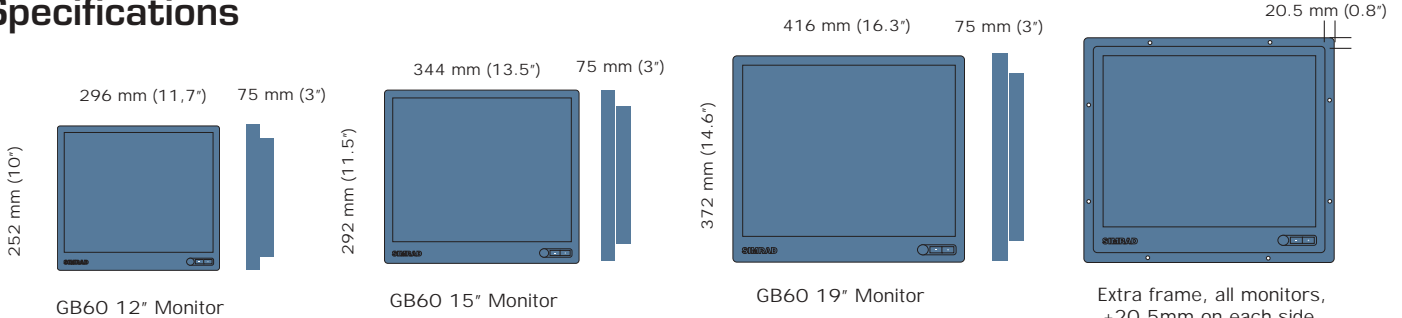


Move around between monitors & views, toggle AIS & ARPA targets on/off and radar overlay on/off.



Move around between monitors & views, open/activate routes and "Enter" button.

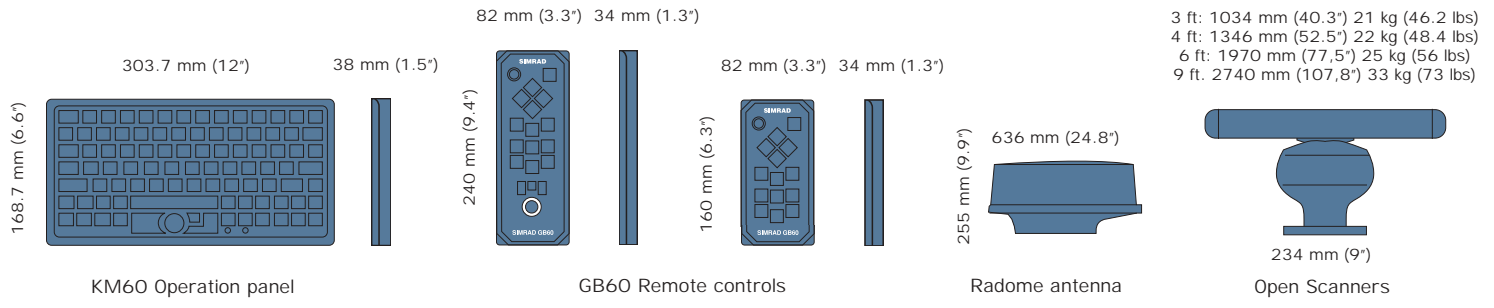
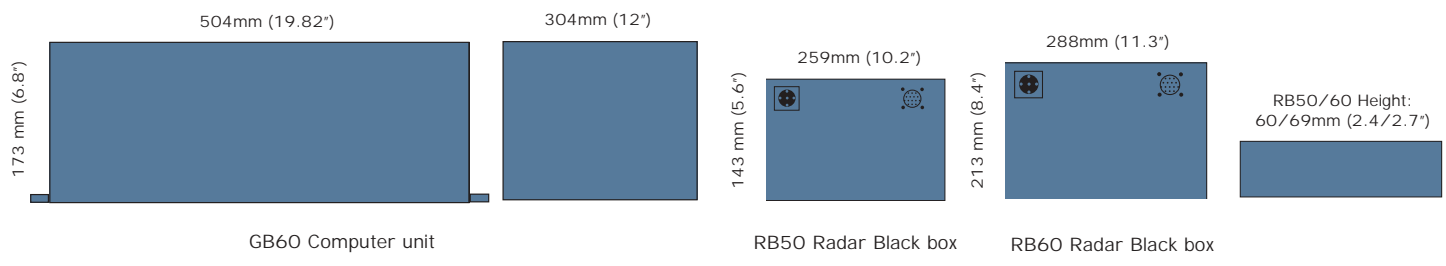
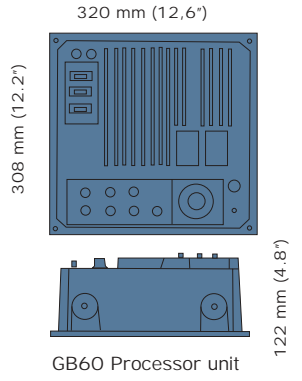
Specifications



GB60 Monitors	12"	15"	19"
Power supply 24Vdc	19.4W	32.6W	65W
Screen resolution	1024x768	1280x1024	1280x1024
Weight	4.4 kg / 9.9 lb	7.4 kg / 16.4 lb	8.4 kg / 18.7 lb
Additional weight	+0.5 kg / 1.1 lb	+0.6 kg / 1.3 lb	+0.6 kg / 1.3 lb

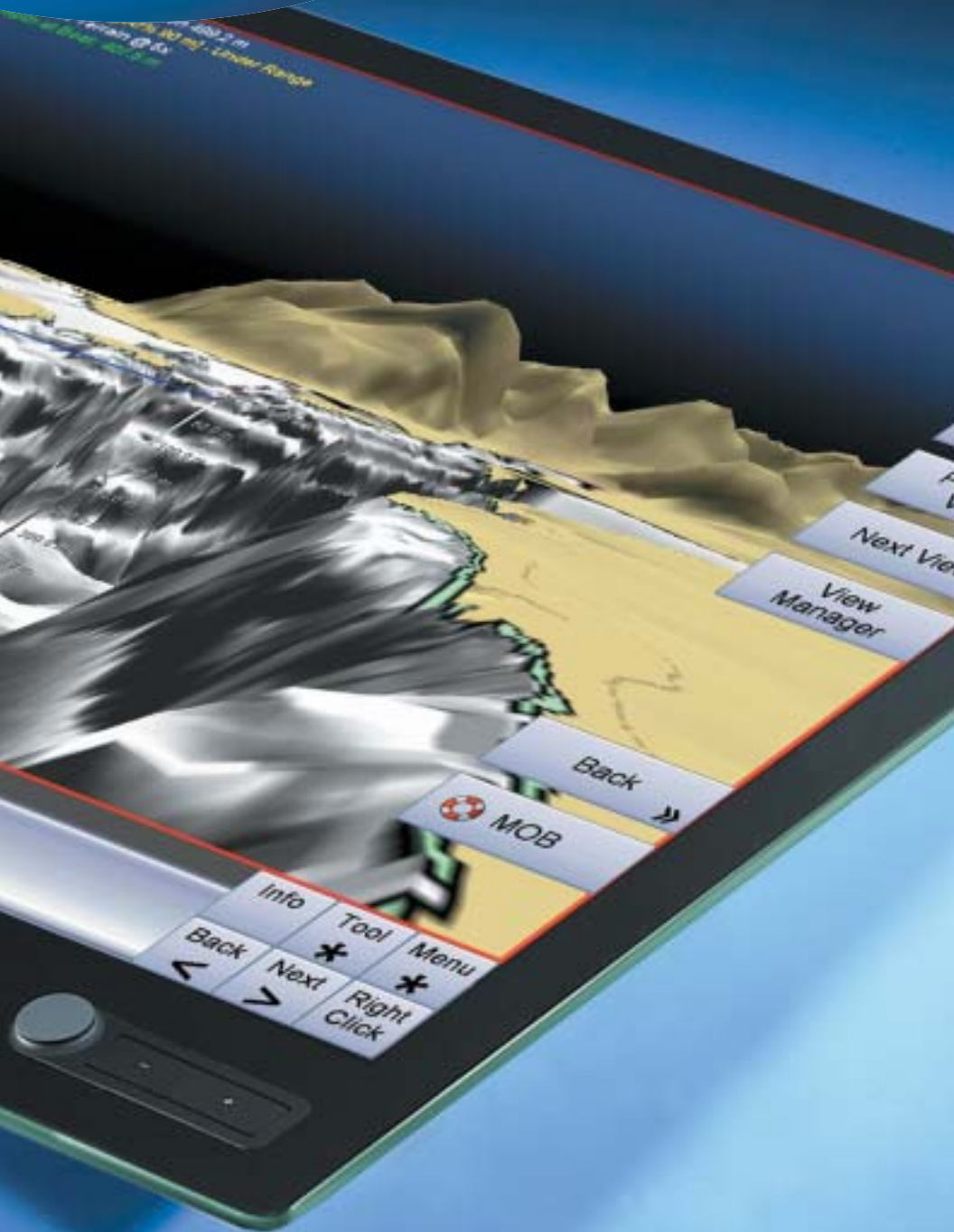
GB60 Computer unit	
Power supply 24Vdc	240W max
Weight	9 kg / 20 lb

RB60 DVD module	
Power supply 24Vdc	40W



RA60 Radar series					
Models	RA61	RA62	RA63	RA64	RA65
Power supply 24Vdc	55W	70W	80W	90W	130W
Output power	4kW	4kW	8kW	12kW	25kW
Radar box	RB50	RB50	RB60	RB60	RB60
Range	36NM	48NM	64NM	72NM	96NM
Scanner size	2ft. dome	3/4ft. open canner	4/6 ft. open scanner	6/9 ft. open scanner	6/9 ft. open scanner

NEW
2007



Simrad GB60 Glass Bridge® System



Chart/Photo



Radar



3D



Security



Flexi Screen

Simrad GB60 Glass Bridge® system



SIMRAD
GB
SYSTEM



Sharp, stylish, high resolution Glass Bridge Monitors in 12", 15" and 19" perform better and are physically 25% 'smaller' than other monitors on the market, saving bridge and console space onboard.

GB60 - The World's most flexible navigation system!

Designed to provide owners of large yachts with a total overview of their surroundings and complete control of the vessel, the GB60 promises unparalleled flexibility and superior performance through high design values and the use of powerful technology.

The flexibility of the system enables the user to configure more than 12 monitors in different ways and with any combination of applications. Vector charts, photos, radars, nav info, raster charts, 3D, Video inputs and much more may be displayed, all at an exceptionally high resolution for even clearer information on the screens.



Tailor made waterproof keyboard with built-in track pad for precise operation of the GB60 at sea.



In strong Simrad tradition, the rubber keys are of course back-lit for safe operation at night.



The new Simrad GB60 Glass Bridge system is especially designed and tailor made for Superyachts and larger cruisers.

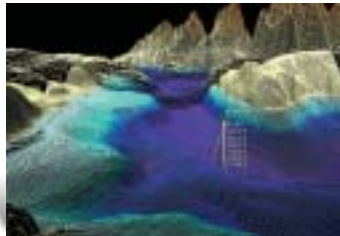
Passport charts and data on board...



Examples of information available from Jeppesen Marine.



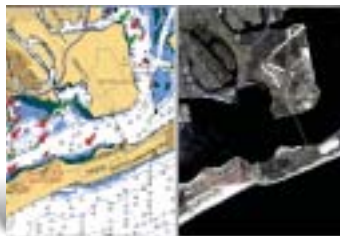
Jeppesen raster chart.



3D image generated based on passport data.



Tides & Currents overlaid on a vector chart.



Aerial photo with streets and roads overlaid.

The world leader in aviation navigation data

Early mariners looked to the stars and the horizon to safely and accurately navigate the world's water. Today, the enduring connection between sea and sky takes on new significance, as Jeppesen, the world's leader in aviation navigation data, extends its expertise and capabilities to provide advanced solutions for marine use. For more than 70 years, Jeppesen's constant innovation and willingness to challenge the status quo has led to countless advancements in navigational information and data delivery.

Jeppesen continues to explore new possibilities to help customers reach their current and future destinations safely and successfully. As marine technology and customer needs evolve, Jeppesen remains at the forefront of innovation with the advanced tools, information, and support necessary to make every voyage possible. Designed with affordability, simplicity and chart clarity in mind, Jeppesen Marine Passport cartography contains all the data you need for safe and easy navigation at home or around the globe. Passport world charts are intelligent vector charts that were created using data from NOAA, the UKHO and other hydrographic offices around the world. In addition, for selected regions in North America, Passport (Deluxe) provides you with additional navigation data such as 3D bathymetric charts, raster, photo and topo charts, a ports and services database, a world port index and more*. No other data set that is available for chartplotters offers you this much navigation information in one easy-to-use package. Look to Jeppesen for innovative information solutions and up-to-date charts, ready for immediate use.

Passport World Charts™



To purchase Jeppesen Marine navigation data you can visit www.passportonboard.com, call the Passport chart center, or contact your Simrad dealer. Provide your product serial number and indicate the regions you wish to purchase. For each data region you purchase, a chart

permit is created, securely encoded for your GB60 only. A world folio (WF) DVD ships with your GB60. Simply type the permit number into the Chart Table within the GB60, and place the DVD in the drive. Chart data is immediately installed.



*Not all regions include all data types. Data sets for Europe are being created. Please contact Simrad or the Passport OnBoard Chart Center for more information.

Photo blending, chart draping and conning displays...

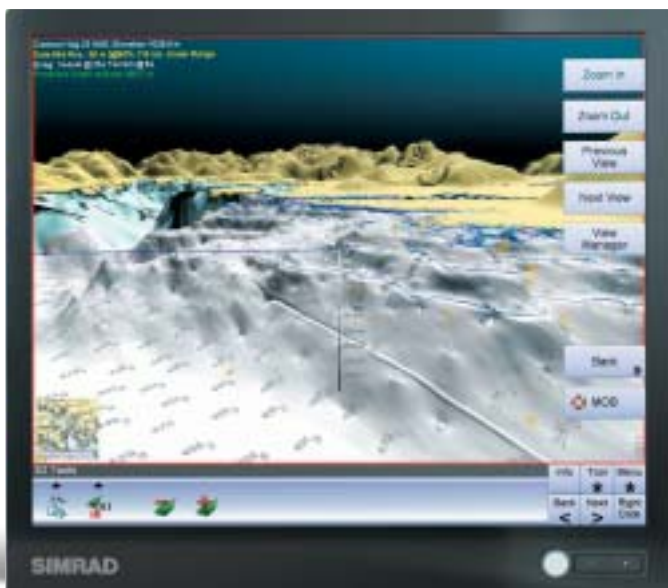


Full flexibility with synchronized charts and photos

The GB60 is capable of displaying vector charts and satellite/air photos side by side and over/under or mixed together. You can set the mixing grade between the electronic chart and the photo for an amazing effect unique to the GB60. The boat is then overlaid showing position, routes and marks all actually on the photo.



Synchronized charts and photos provides a better overview.



Extreme 3D presentation

With the GB60's 3D generator you can display a long range of customized views, both off and on shore. The dynamic 3D image may be overlaid by a vector chart (chart draping) to bring the landscape alive. Depth contours will also make more sense in this view. Several 3D vessel model types can be selected to fit your boat type. The appearance of the sky, water and terrain may be configured to match the time of day.



3D picture with night setting.



Get important information were you want it

If you really want to pay close attention to navigational information while following a route, a predefined and detailed "Nav Info" window has been created. Here you see vessel status, which route is active, info about the upcoming waypoint and the rest of voyage. All other applications are still running in the background and may be viewed by a button click.



You can of course place the Nav Info Window anywhere you desire in the system.

GB60 radar, chart with radar overlay, and video control...



Dual speed radars with virtually unlimited target tracking

Each GB60 black box can control up to two RA60 series radars. The system can also utilize more radars when several GB60s are networked. The RA60 is a dedicated GB60 radar series connecting directly to the GB60 black box via Ethernet. All the RA60 radar functions such as range, gain, rain & sea clutter and many more are controlled on the display via the KM60 keyboard or other GB60 dedicated operating units. Get the speed, course, collision warning from other vessels, and see them graphically with vectors relative to your own boat.



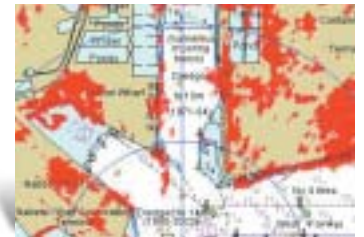
The RA60 series is available as a 2ft radome with 4kW or, open 3ft, 4ft, 6ft or 9ft scanners with 4kW up to 25kW output power.



Radar overlaid on a chart ensures better safety

With Simrad's special radar overlay you can double check chart information in real time and confirm navigation marks and buoys in the chart with the radar echos. Distinguish if the echo is a mark or another vessel, and acquire and track the other vessel right on the chart to secure your own safe passage. Split the screen(s) to show the situation from different angles like North up, Course up, Leg up and/or Heading up for correct interpretation.

The GB60 also features "Auto Range" which will synchronize the range between the radar and the chartplotter.



Multi range used to view specific areas of interest.



Watch above deck, below deck or below the water

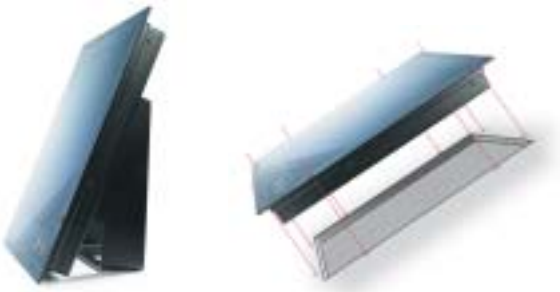
Each GB60 black box can control up to four video inputs. Here you can connect one or more Simrad supplied stainless steel, waterproof, day & night, high resolution cameras and/or the boat's entertainment system and /or any other application with a composite video output.

Waterproof, day/night, high resolution stainless steel camera with up to 10m (30') range at night.



Displaying all significant vessel components...

We have developed a new series of "Glass Bridge Monitors" available in 12", 15", and 19". These monitors are not only better performing than ever, they are also 25% "smaller" than other monitors on the market today. This means that with a Simrad "Glass Bridge Sunlight Viewable Display" you can fit a 19" monitor where you previously had a typical 15" installed. Due to the size and the exceptionally high resolution of these displays, this means you can view much more and clearer information in a much smaller space than previously with any other product. If one monitor isn't enough, you can control in excess of 12 monitors on a GB60 network. The Glass Bridge Monitors come in two versions: Standard or with a frame for easier flush mount.



RB60 Black Box

Handling all the information and graphics possible in the GB60 is very demanding, but through a powerful dual processor system, this black box is built to meet high end client's needs. Since the GB60 is SimNet and NMEA2000 compatible, interfacing it i.e. to a Simrad GPS and Autopilot is extremely easy. The system is also expandable for future planned hardware and software functions.

Ethernet network switch. No hub is required. Just connect to the next black box.

Four Com ports as standard. Can be expanded to five if SimNet is not in use.

Outputs for three monitors. Choose between VGA (standard), DVI (digital) and SVHS (television).



RSI (Radar Signal Interface) Here you connect external radar. i.e. RA90P.

SimNet. Connect the GB60 to SimNet and get all the info needed.

Four video inputs for cameras, the vessel's entertainment system or any other video applications.



GB60 Standard with outputs for three monitors

Connect three monitors in combination between VGA (standard) DVI (digital) and SVHS (television) video outputs.



RB50/60 Radar black box

RA60 - GB60's own radar series

This is a radar series specially developed for use in the GB60 Glass Bridge System. Up to two RA60 series radars may be connected to each GB60 black box simultaneously. The series consists of two black box models: RB50 (4kW Radar Box) and RB60 (4kW to 25kW Radar Box) and connects directly to the GB60 through an Ethernet cable.



RA80/90 Black box



Operating panel.

Connecting GB60 to stand alone radars

On larger yachts the wish or need for a type approved (IMO) radar may arise. To accommodate the Simrad RA90P 19" a special Radar Signal Interface (RSI) input has been developed. With RSI you can directly connect a Simrad stand alone radar* for radar overlay and target tracking by GB60.

*In this configuration the "external" radar is operated separately and/or by the GB60.